

**Issued by**  
**Central Ground Water Board**  
**Uttaranchal Region, Dehradun**

## **GROUND WATER LEVEL BULLETIN**

**MAY 2024**

**UTTARAKHAND STATE**

## 1.0 INTRODUCTION

Groundwater bulletin is prepared by CGWB depicting changes in groundwater regime of the country through different seasons. It is an effort to obtain information on groundwater levels through representative monitoring wells. The important attributes of groundwater regime monitoring are groundwater level.

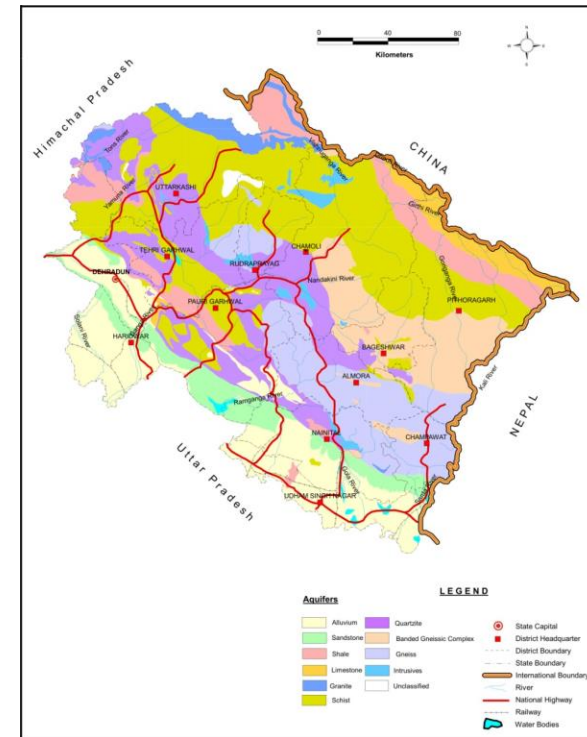
The natural conditions affecting the groundwater regime involve climatic parameters like rainfall, evapotranspiration etc., whereas anthropogenic influences include pumpage from the aquifer, recharge due to irrigation systems and other practices like waste disposal etc.

Groundwater levels are being measured by Central Ground Water Board four times a year during January, March/April/May, August and November. The regime monitoring started in the year 1969 by Central Groundwater Board. A network of 25437 observation wells called **National Hydrograph Network Stations (NHNS)**, as on 30.04.2023, located all over the country is being monitored.

## 2.0 STUDY AREA

Uttarakhand State has a very diverse hydrogeological set-up. However, this hilly state can broadly be classified into two hydrogeological regimes namely Gangetic Alluvial Plain and Himalayan Mountain Belt. As per 2023 Groundwater resource assessment, Total Annual Ground Water Recharge of the State

has been assessed as 2.02 bcm and Annual Extractable Ground Water Resource is 1.85 bcm. The Total Current Annual Ground Water extraction is 0.95 bcm and Stage of Ground Water extraction is 51.69 %.



**Fig.1 : Map showing disposition of principal aquifers of Uttarakhand State**

The hydrogeology of Uttarakhand is related to geology and physiography. Variable hydrogeological conditions exist in the state due to a wide variation in the geology and land forms. The regional hydrogeological setup can be described on the basis of

five hydrogeological units from north to south. (i) Himalayan Region, (ii) Sub-Himalayan Region, (iii) Bhabhar Zone, (iv) Tarai Zone and (v) Central Ganga Plain. The Disposition of Principle Aquifer system of Uttarakhand State is given in the Fig. (1).

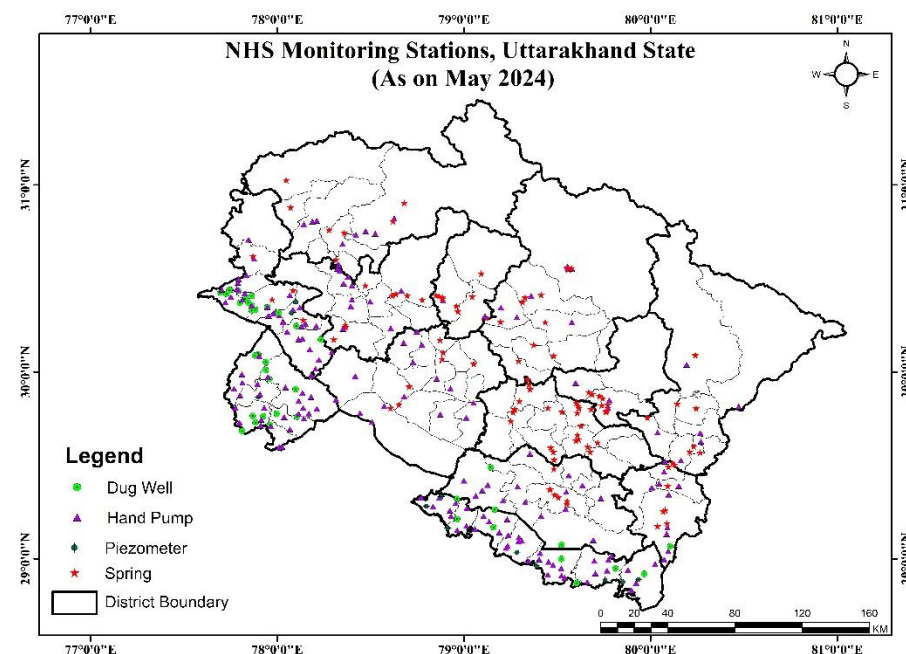
### 3.0 GROUND WATER LEVEL MONITORING

Central Ground Water Board, Uttaranchal Region, is monitoring changes in groundwater regime in Uttarakhand state on quarterly basis continuously. This is facilitated by a network of monitoring stations in the State located in diverse hydrogeological and geomorphic units. The number of operational wells till May 2024 was 359 which include 40 dug wells, 194 Handpumps, 109 Springs, 4 deep aquifer tubewells and 12 piezometers.

**Table 1: district-wise number of monitoring stations**

District	Number of Stations				
	DW	PZ	HP	Spring	TW
Dehradun	16	3	35	4	2
Haridwar	13	1	29	0	1
US Nagar	7	8	39	0	0
Pauri Garhwal	0	0	13	7	0
Tehri Garhwal	0	0	12	8	0
Nainital	3	0	14	7	1
Almora	0	0	11	27	0
Pithoragarh	0	0	7	9	0
Bageshwar	0	0	5	10	0

Chamoli	0	0	8	16	0
Rudraprayag	0	0	2	8	0
Champawat	1	0	9	6	0
Uttarkashi	0	0	10	7	0



**Fig.2: NHS monitoring stations of Uttarakhand State, as on May,2024**

## 4.0 GROUND WATER LEVEL SCENARIO

### 4.1 Depth to Water level (May 2024)

The depth to water level of 226 wells is used for the analysis. Analysis of depth to water level data of 226 wells shows water levels vary between 0.63 m bgl (Haridwar district) to 96.82 m bgl (Pauri Garhwal district). Water level of less than 5 m bgl is recorded in 13.27 % of wells, between 5 to 10 m bgl in 23.1% of wells, between 10 to 15 m bgl in 19.03% of wells, between 15 to 30 m bgl in 22.57 % of wells, between 30-50 m bgl in 13.27% of wells and water level more than 50 mbgl is registered in 8.85% of wells.

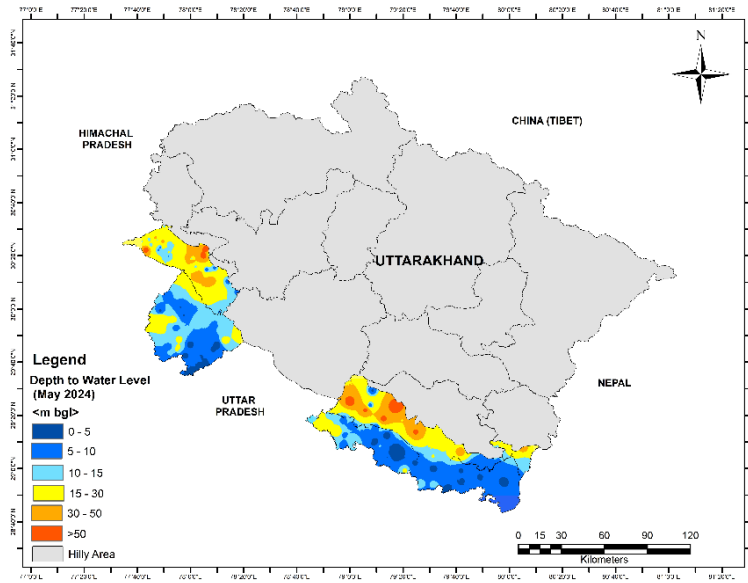


Fig.3: Depth to Water level Map (May 2024), Uttarakhand State

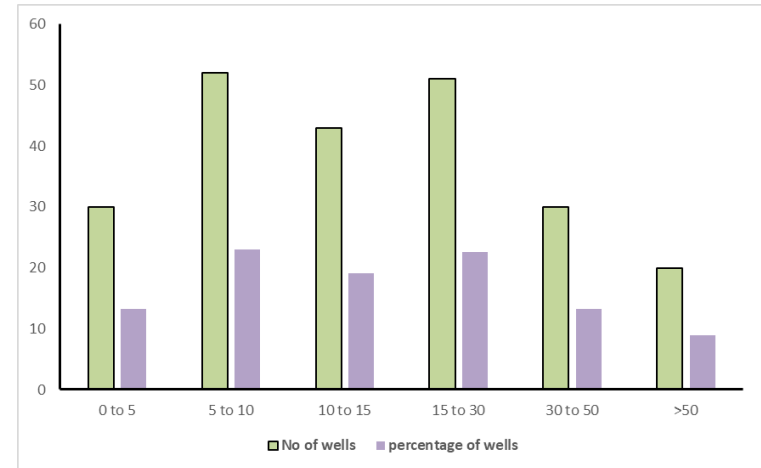


Fig.4: Percentage of wells in different water level range

## 4.2 Fluctuation in Water level in past 03 years (May 2021 to May 2023 Vs May 2024)

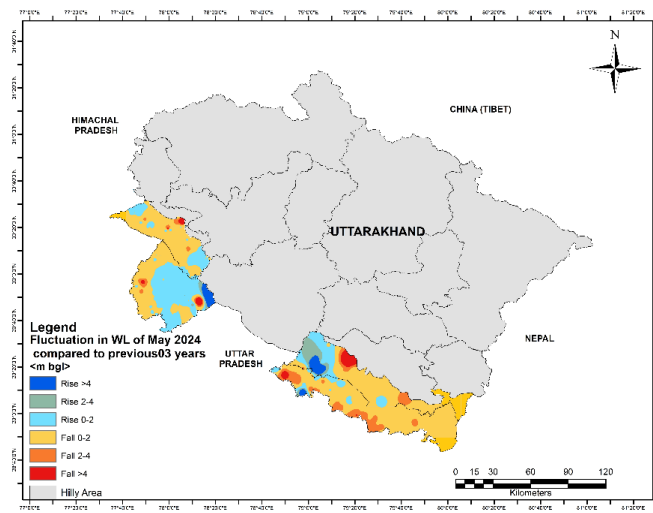


Fig. 5: Fluctuation in water level (May 2021 to May 2023 Vs May 2024)

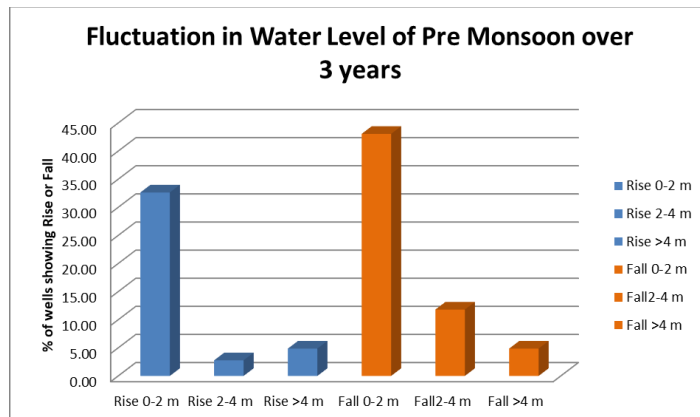


Fig. 6: Percentage of wells showing different fluctuation range in last three years

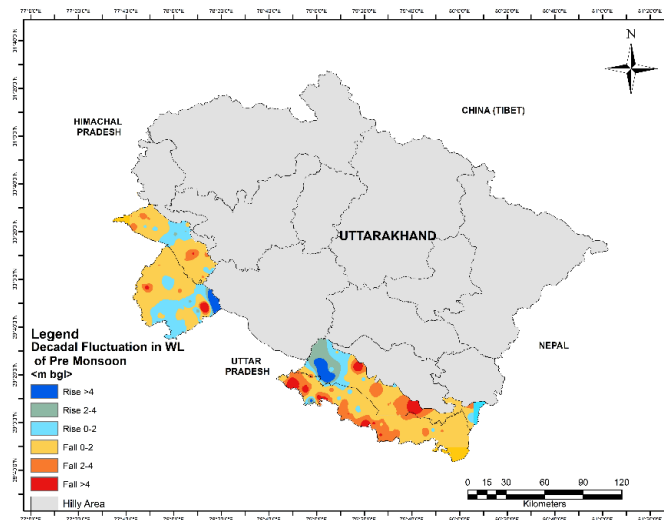
### Rise in Water level:

Out of 144 wells, 58 wells (40.28% of total wells) are showing rise in water level in May 2024 when compared with last three years pre-monsoon water level data. Out of 144 wells, 32.64 % of the wells showing rise in the range of 0-2 m, 2.78 % of wells showing rise in the range of 2-4 m while, only 07 wells (4.86% of the total) showing rise greater than 4 m. Rise of more than 4 m is mainly observed in the eastern most flank of Haridwar district and in a small patches in the Haldwani block of the Nainital district.

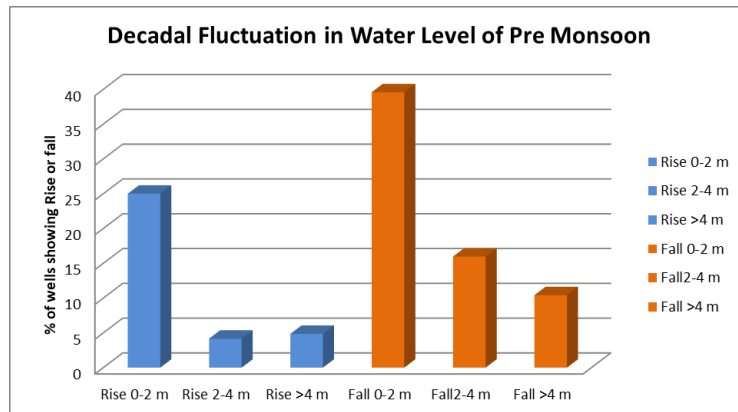
### Fall in Water level:

Out of 144 wells, 86 wells (59.72% of total wells) are showing fall in water level in May 2024 when compared with last three years pre-monsoon water level data. Out of 144 wells, 43.06 % of the wells showing fall in the range of 0-2 m, 11.81 % of wells showing fall in the range of 2-4 m while, only 07 wells (4.86% of the total) showing fall greater than 4 m. Fall in the range of 0-2 m is being observed in the major part of the state cover major area of Dehradun Valley, Udham Singh Nagar district, Champawat district and Nainital district.

#### 4.3 Decadal Fluctuation in Water level (May 2014 to May 2023 Vs May 2024)



**Fig. 7: Decadal Fluctuation in water level (May 2014 to May 2023 Vs May 2024)**



**Fig. 8: Percentage of wells showing different decadal fluctuation range**

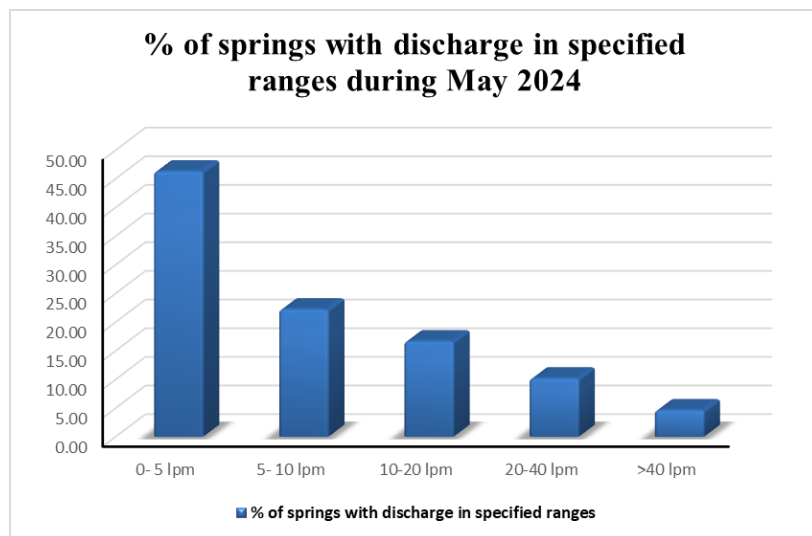
#### Rise in Water level:

Out of 144 wells, 49 wells (34.03% of total wells) are showing rise in water level in May 2024 when compared with last 10 years (2014-2023) pre-monsoon water level data. Out of 144 wells, 25 % of the wells showing rise in the range of 0-2 m, 4.17 % of wells showing rise in the range of 2-4 m while, only 07 wells (4.86% of the total) showing rise greater than 4 m. Rise of more than 4 m is mainly observed in the eastern most flank of Haridwar district and in a small patches in the Haldwani block of the Nainital district.

#### Fall in Water level:

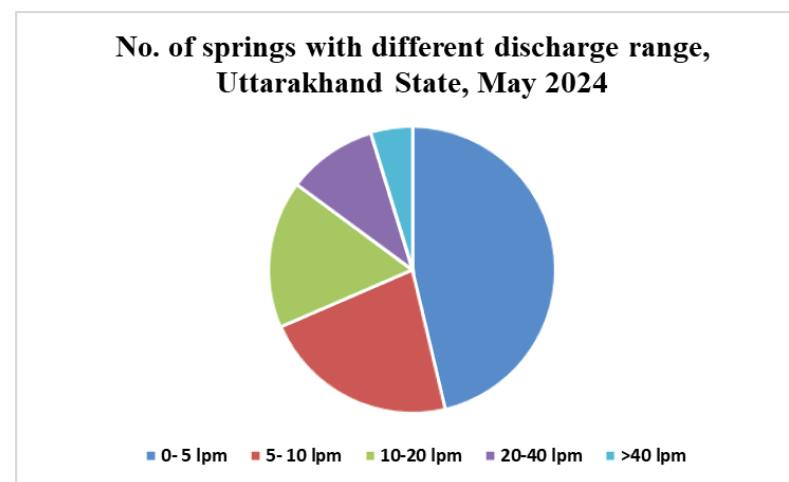
Out of 144 wells, 95 wells (65.97% of total wells) are showing fall in water level in May 2024 when compared with last last 10 years (2014-2023) years pre-monsoon water level data. Out of 144 wells, 39.58 % of the wells showing fall in the range of 0-2 m, 15.97 % of wells showing fall in the range of 2-4 m, while 15 wells (10.42% of the total) showing fall greater than 4 m. Fall in the range of 0-2 m is being observed in the major part of the state cover major area of Dehradun Valley, Udham Singh Nagar district, Champawat district and Nainital district.

#### 4.4 Measurement of Spring discharge in the Hilly Regions



**Fig.9: Percentage of Spring with discharge (in lpm) in specified range, Uttarakhand State**

Total 108 numbers of Springs were measured for their discharge (in lpm) in Uttarakhand State in the month of May 2024. Out of 108 numbers of measured springs, 46.30% (50 numbers out of 144) were showing discharge in the range of 0-5 lpm, 22.22% (24 springs) were showing discharge in the range of 5-10 lpm, 16.67 (18 springs) were showing discharges in the range of 10-20 lpm, 10.19 % (11 springs) were showing discharge in the range of 20-40 lpm and only 5 springs out of 144 (i.e. 4.63% of the total) were showing discharge more than 40 lpm. Minimum discharge of 0.27 lpm was observed in the Soda Sarauli Spring of Dehradun district while Maximum discharge of 168 lpm was observed in the Khandoli spring of Dehradun district during the pre-monsoon 2024.



**Fig.10: Number of Spring with discharge (in lpm) in specified range, Uttarakhand State**